

MONTHLY MEMBERSHIP PROGRESS REPORT

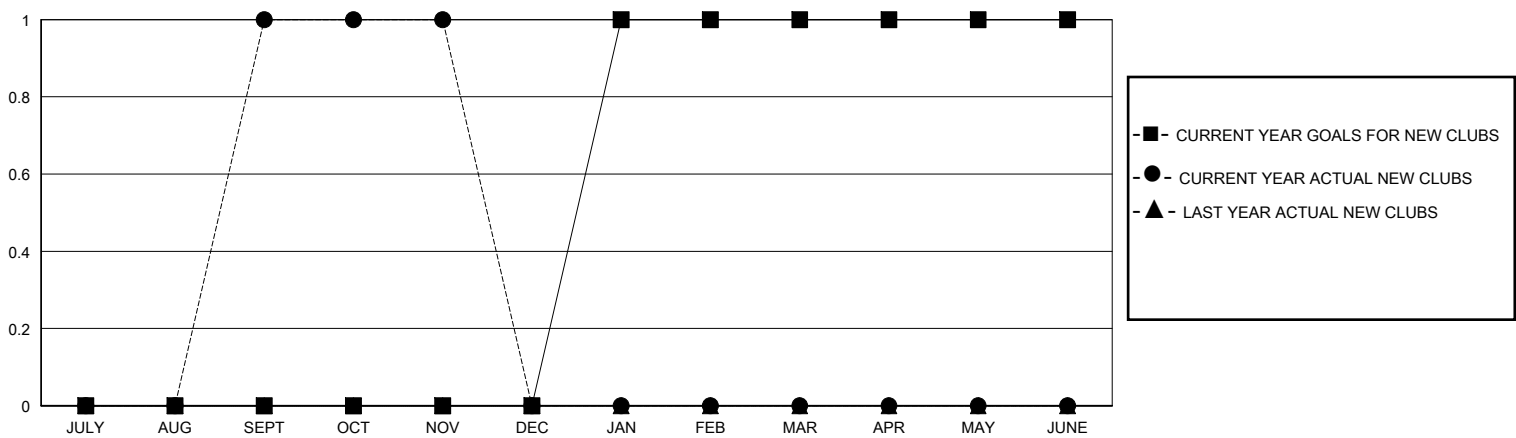
District 33 S

Results as of: 11/30/2025

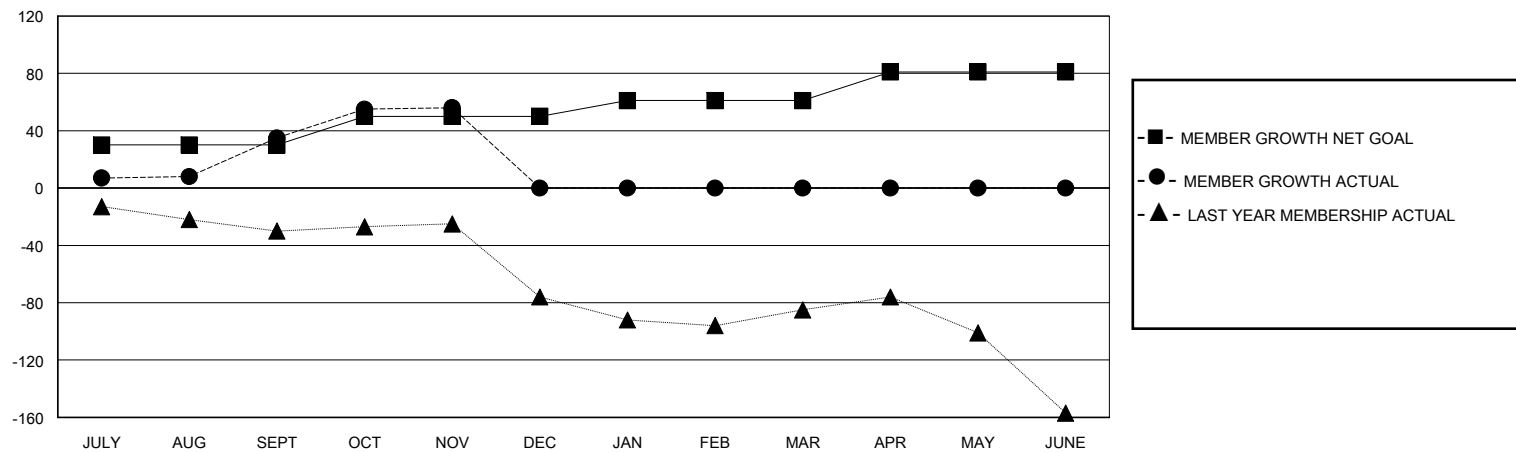
GMT: LOCATION MASSACHUSETTS GMT CA

Clubs				Members			
RESULTS FOR 2025-2026				RESULTS FOR 2025-2026			
QUARTER	NEW CLUB GOAL	NEW CLUBS	DROPPED CLUBS	QUARTER	MEMBER GROWTH NET GOAL	MEMBER GROWTH ACTUAL	DROPPED MEMBERS ACTUAL (including transfers)
JULY/AUG/SEPT	0	1	0	JULY/AUG/SEPT	30	64	27
OCT/NOV/DEC	0	0	0	OCT/NOV/DEC	20	37	15
JAN/FEB/MAR	1	0	0	JAN/FEB/MAR	11	0	0
APR/MAY/JUNE	0	0	0	APR/MAY/JUNE	20	0	0

GOALS AND ACTUAL NEW CLUBS CUMULATIVE



GOALS AND ACTUAL MEMBERS CUMULATIVE



DROPPED CLUBS: 0	19 CLUBS OF 47 ADDED 1 OR MORE NEW MEMBERS	<u>GENDER DISTRIBUTION</u> MALE 847 (59.11%) FEMALE 585 (40.82%)
<u>DROPPED MEMBERS</u> DECEASED 9 CLUB CANCELLED 0 OTHER 33 TOTAL 42	CLICK HERE FOR CUMULATIVE MEMBERSHIP DATA	TOTAL FAMILY UNIT MEMBERS 233 FAMILY MEMBERS PAYING HALF DUES 117